



Manugraph DGM, Inc.

---

Unit Type: **DGM 440 (4 units)**

Folder Type: **Goss® SSC™ Folder (1 folder)**

Cut-Off: **22-3/4"**

Web Width: **36" Web**

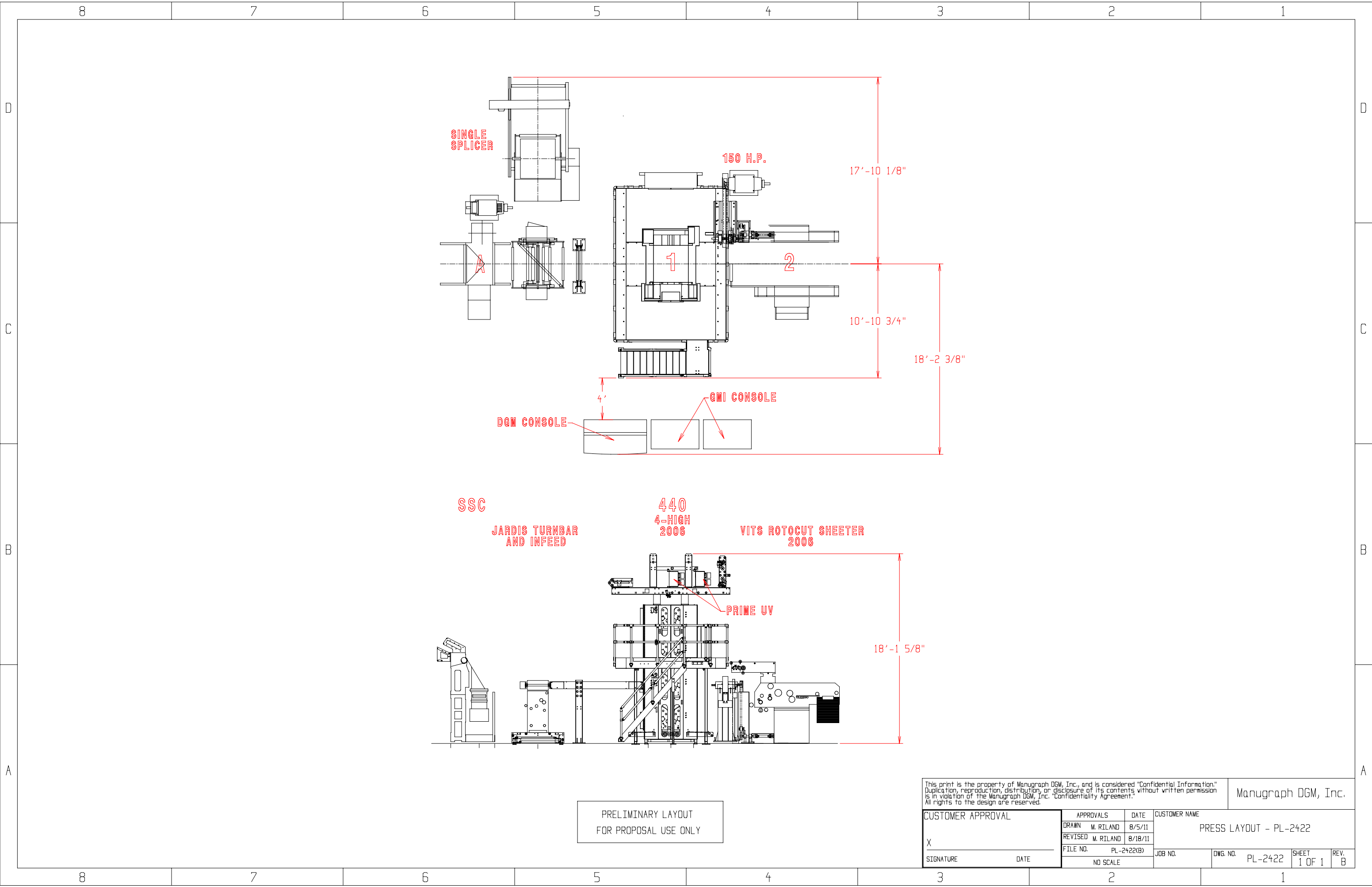
Equipment Configuration: **One Complete Pressline consisting of**  
**1 - Goss® SSC™ Folder**  
**1 - DGM 440 4-High - 36" Web**  
**1 - Vits Rotocut Sheeter**

**Pressline Details: Ref. sheet 2 (PL-2422)**

**One DGM 440 (36" Web) UV Press, Goss® SSC™ Folder, and Cover Production System**

- DGM 440 (36" Web) Tower 1 Equipped with Prime Four Lamp UV System
- GMI Remote Inking with CIP 3 Presets
- Goss® SSC™ ½ & ¼ Folder – Location A
- Vits Sheeter with Power Slitter and Rotary Cut Knife Cylinder – Location 2
- One (1) Jardis Infeed Supporting Turnbar
- One (1) Jardis Closed Loop Infeed
- One (1) Martin Splicer
- One (1) 150 H.P. Motor & Controller
- One (1) Ternes Semi-Auto Plate Blender

**Please contact Dave Moreland at (800) 346-6119 or [dmoreland@manugraphdgmusa.com](mailto:dmoreland@manugraphdgmusa.com) to inquire about this equipment.**



PRELIMINARY LAYOUT  
FOR PROPOSAL USE ONLY

This print is the property of Manugraph DGM, Inc., and is considered "Confidential Information." Duplication, reproduction, distribution, or disclosure of its contents without written permission is in violation of the Manugraph DGM, Inc. "Confidentiality Agreement." All rights to the design are reserved.

Manugraph DGM, Inc.

CUSTOMER APPROVAL		APPROVALS	DATE	CUSTOMER NAME	
X	SIGNATURE	DRAWN	M. RILAND	8/5/11	PRESS LAYOUT - PL-2422
		REVISED	M. RILAND	8/18/11	
	DATE	FILE NO.	PL-2422(B)	JOB NO.	DWG. NO. PL-2422
			NO SCALE	SHEET 1 OF 1	REV. B