



Manugraph DGM, Inc.

---

Unit Type: **DGM 430 (52 units), Goss® SSC™ (8 units), DGM 440 (4 units)**

Folder Type: **SSC™ Folder (3 folders), DGM 1035**

Cut-Off: **22-3/4"**

Web Width: **Line #1 - 35" Web Line #2 - 35" & 36" Web (SOLD)**

Equipment Configuration: **Two Complete Presslines consisting of**

**Line #1**

**10 - DGM 430 4-Highs**

**1 - Goss® Community® 4-Highs**

**3 - SSC™ Folders**

**Line #2 - SOLD**

**3 - DGM 430 4-Highs**

**1 - Goss® Community® 4-High**

**1 - SSC™ Folder**

**1 - DGM 440 4-High - 36" Web**

**1 - DGM 1035**

**1 - Vits Rotocut Sheeter**

**Pressline Details: Ref. sheet 3 (PL-2388)**

- DGM 430 Towers – Location A, D, E, F, G, I, J, K, L, & N
- Goss® Community® Tower – Location B
- Goss® SSC™ Folders – Location C, H, & M
- Eleven (11) QTI® RGS IV Automatic Color-to-Color Register Systems
- Twelve (12) Martin Festoon Splicers Arranged as Six (6) Tandem Pairs
- Six (6) Fincor Motors and Controllers, (Four 150's & Two 100's)
- All Associated Aux's, Spare Parts, and Connecting Components, Manuals, Diagrams, and Schematics.

**Pressline Details: Ref. sheet 4 (PL-2387) - SOLD**

- DGM 430 Towers – Location A, B, & C
- Goss® Community® Tower – Location E
- Goss® SSC™ Folder – Location D
- Five (5) QTI® RGS IV Automatic Color-to-Color Register System
- Three (3) Martin Festoon Splicers Arranged as One (1) Tandem Pairs and One (1) Single
- Two (2) Fincor Motors and Controllers, (Two 125's)

***Continued on sheet 2***

**Please contact Dave Moreland at (800) 346-6119 or [dmoreland@manugraphdgmusa.com](mailto:dmoreland@manugraphdgmusa.com) to inquire about this equipment.**



Manugraph DGM, Inc.

---

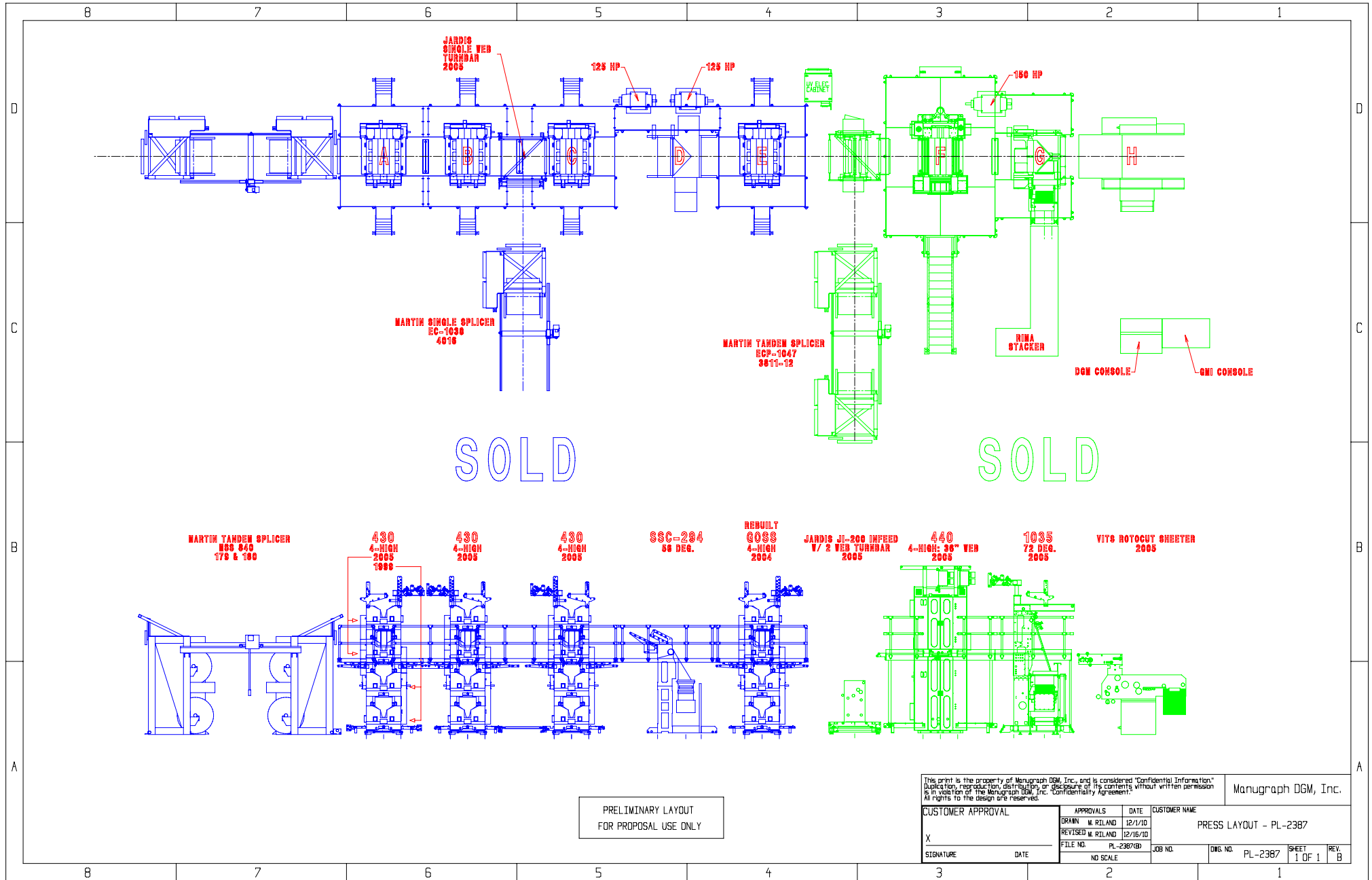
**Pressline Details: Ref. sheet 4 (PL-2387) - **SOLD** Continued...**

**One DGM 440 (36" Web) UV Press, 1035 Folder, and Cover Production System**

- DGM 440 (36" Web) Tower F Equipped with Prime Four Lamp UV System
- GMI Remote Inking with CIP 3 Presets
- DGM 1035 ½ & ¼ Folder – Location G
- Vits Sheeter with Power Slitter and Rotary Cut Knife Cylinder – Location H
- Closed Loop Infeed and One (1) Martin Splicer
- One (1) 150 H.P. Motor & Controller
- One (1) Ternes Semi-Auto Plate Blender
- All Associated Aux's, Spare Parts and Connecting Components, Manuals, Diagrams and Schematics

**Please contact Dave Moreland at (800) 346-6119 or [dmoreland@manugraphdgmusa.com](mailto:dmoreland@manugraphdgmusa.com) to inquire about this equipment.**





SOLD

SOLD

PRELIMINARY LAYOUT  
FOR PROPOSAL USE ONLY

This print is the property of Manugraph DGM, Inc. and is considered "Confidential Information." Duplication, reproduction, distribution, or disclosure of its contents without written permission is in violation of the Manugraph DGM, Inc. Confidentiality Agreement. All rights to the design are reserved.

Manugraph DGM, Inc.

CUSTOMER APPROVAL		APPROVALS	DATE	CUSTOMER NAME
X		DRAWN	M. RILAND	12/1/10
		REVISED	M. RILAND	12/16/10
SIGNATURE	DATE	FILE NO.	PL-2387(0)	JOB NO.
		NO SCALE		DWG. NO. PL-2387
				SHEET 1 OF 1
				REV. B