



Manugraph DGM, Inc.

Unit Type: DGM 430 (4 Units) Goss® SC™ (14 units)

Folder Type: Goss® SC™ Folder (2 folders)

Cut-Off: 22-3/4"

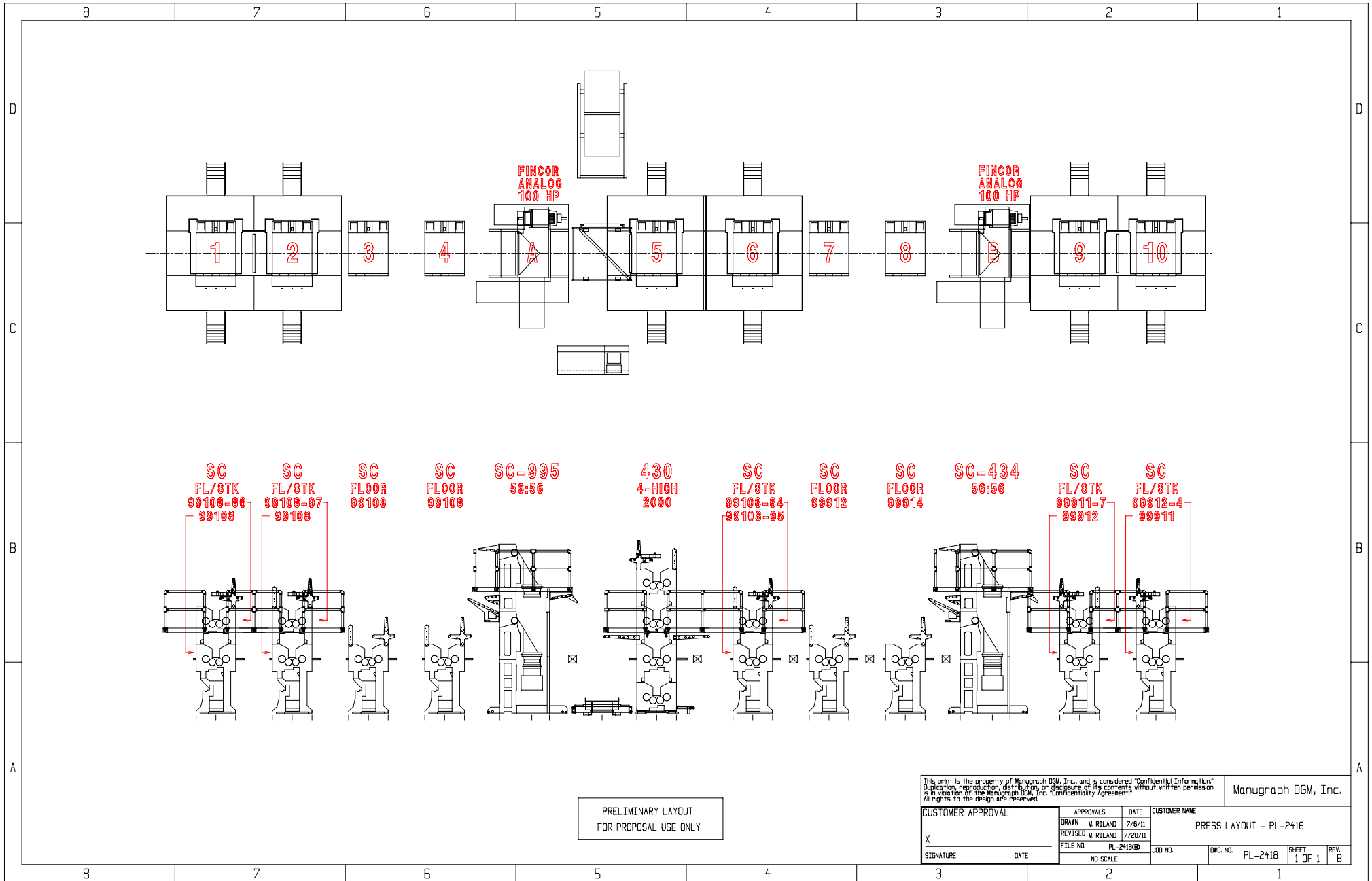
Web Width: 35" Web

Equipment Configuration: Complete Pressline consisting of
1 - DGM 430 4-High
5 - Goss® SC™ Floor/Stack Units
4 - Goss® SC™ Floor Units
2 - Goss® SC™ Folders

Pressline Details: Ref. sheet 2 (PL-2418)

- DGM 430 4-Highs - Year 2000 - Location 5
- Goss® SC™ Floor/Stack Unit - Location 1, 2, 6, 9, & 10
- Goss® SC™ Floor Unit - Location 3, 4, 7, & 8
- Goss® SC™ Folders w/ 1/4 Folder and Upper Former 56:56 - Location A & B
- One (1) Rollstand
- Two (2) Fincor Motors and Controllers (Two 100 H.P. Motors)
- All Associated Aux's, Spare Parts, and Connecting Components, Manuals, Diagrams, and Schematics.

Please contact Dave Moreland at (800) 346-6119 or dmoreland@manugraphdgmusa.com to inquire about this equipment.



PRELIMINARY LAYOUT
FOR PROPOSAL USE ONLY

This print is the property of Manugraph DGM, Inc. and is considered "Confidential Information". Duplication, reproduction, distribution or disclosure of its contents without written permission is in violation of the Manugraph DGM, Inc. "Confidentiality Agreement". All rights to the design are reserved.

Manugraph DGM, Inc.

CUSTOMER APPROVAL		APPROVALS	DATE	CUSTOMER NAME	
X		DRAWN M. RILAND	7/6/11	PRESS LAYOUT - PL-2418	
		REVISED M. RILAND	7/20/11		
SIGNATURE		FILE NO. PL-2418(B)	JOB NO.	DWG. NO. PL-2418	SHEET 1 OF 1
DATE		NO SCALE			REV. B